



PREMIUM COLLECTION

HOMOGENEOUS COMPACT VINYL



“Improved indoor environment and air quality”

Indoor Environment & Air Quality

Tarkett flooring aims to provide tangible environmental and health benefits to flooring users, particularly in sensitive areas like schools and hospitals. The Premium collection includes two eco-innovations that contribute to improve indoor environment and air quality.



* EXCEPT RECYCLED CONTENT

The phthalate-free plasticizers selected by Tarkett are approved for food contact containers and can be used for toys intended to be placed in the mouth by children



*TVOC AT 28 DAYS

Extremely low VOC emissions
100 times lower than the strictest standards in Europe and certified Platinum

PRIMO PREMIUM

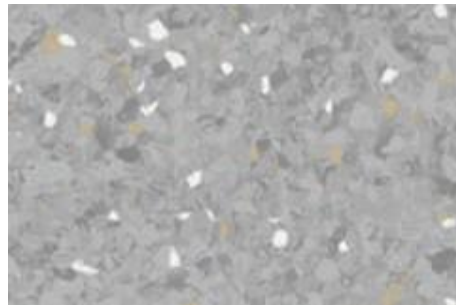


Available in Rolls

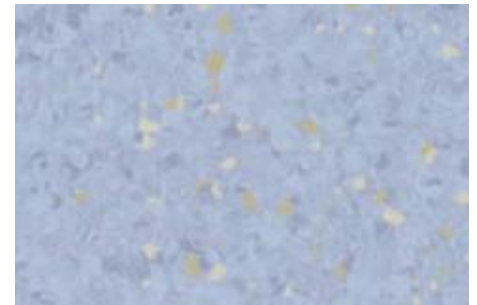
Price Level



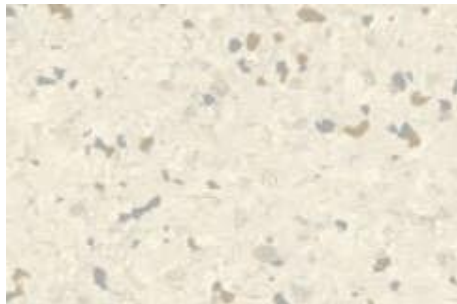
21010 651 Light Pure Grey



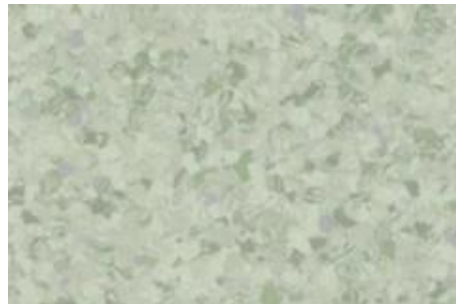
21010 671 Medium Dark Pure Grey



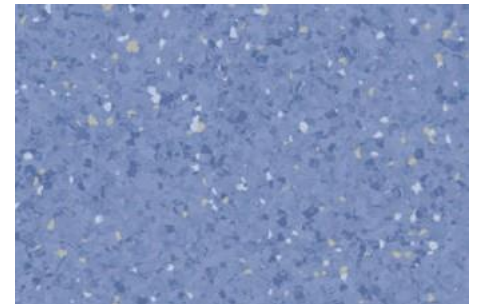
21010 682 Light Blue



21010 678 Light Beige



21010 679 Light Green



21010 665 Medium Blue



21010 659 Dark Warm Beige



21010 688 Light Denium Blue

| Eclipse Premium Spirit | Welding Rod No. |
|------------------------|-----------------|
| 21020 963 | 1290 166 |
| 21020 964 | 1290 167 |
| 21020 965 | 1290 168 |
| 21020 972 | 1290 128 |
| 21020 973 | 1290 174 |
| 21020 979 | 1290 205 |
| 21020 980 | 1290 178 |
| 21020 976 | 1290 177 |
| 21020 994 | 1290 210 |
| 21020 732 | 1290 166 |
| 21020 736 | 1290 202 |
| 21020 728 | 1290 216 |

| Eclipse Premium Classic | Welding Rod No. |
|-------------------------|-----------------|
| 21020 004 | 1290 270 |
| 21020 018 | 1290 269 |
| 21020 010 | 1290 265 |
| 21020 067 | 1290 272 |
| 21020 647 | 1290 194 |
| 21020 039 | 1290 028 |
| 21020 649 | 1290 196 |
| 21020 036 | 1290 264 |
| 21020 645 | 1290 193 |

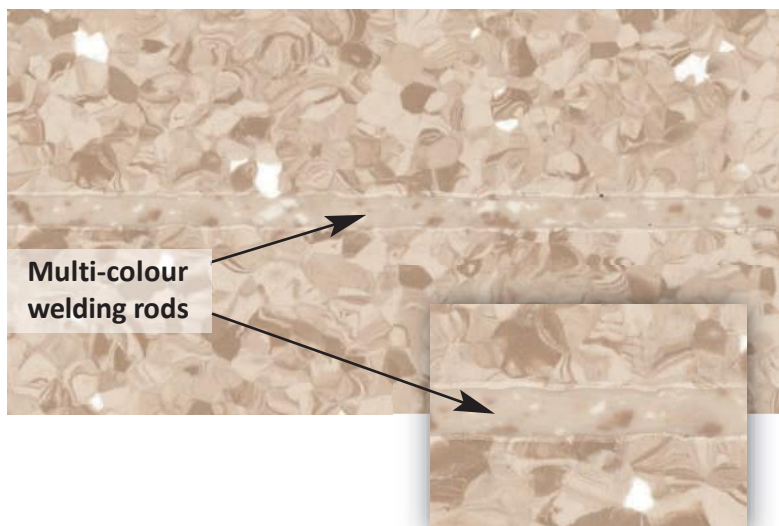
| Primo Premium | Welding Rod No. |
|---------------|-----------------|
| 21010 651 | 1290 152 |
| 21010 659 | 1290 160 |
| 21010 665 | 1290 164 |
| 21010 671 | 1290 022 |
| 21010 678 | 1290 232 |
| 21010 679 | 1290 219 |
| 21010 682 | 1290 234 |
| 21010 688 | 1290 223 |

| Primo SD | Welding Rod No. |
|-----------|-----------------|
| 21012 561 | 1290 274 |
| 21012 562 | 1290 275 |
| 21012 565 | 1290 278 |
| 21012 567 | 1290 280 |
| 21012 569 | 1290 282 |

| Primo Safe.T | Welding Rod No. |
|--------------|-----------------|
| 21013 790 | 1290 283 |
| 21013 794 | 1290 287 |
| 21013 795 | 1290 288 |
| 21013 799 | 1290 292 |
| 21013 806 | 1290 299 |

Multi-colour welding rods

> Colour and pattern coordinated welding rods are available for every colour in the Premium Collection. With contrasting colour chips that coordinate with the flooring's accent colour and design, the welding rods always provide the perfect finishing touch.



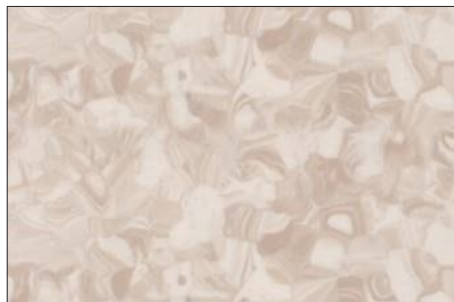
ECLIPSE PREMIUM CLASSIC COLLECTION



Available in Rolls Price Level



21020 645 Light Cool Beige



21020 036 Medium Warm Beige



21020 647 Dark Cool Beige



21020 039 Medium Pure Grey



21020 004 Medium Gold



21020 018 Terracotta



21020 067 Medium Grey Blue



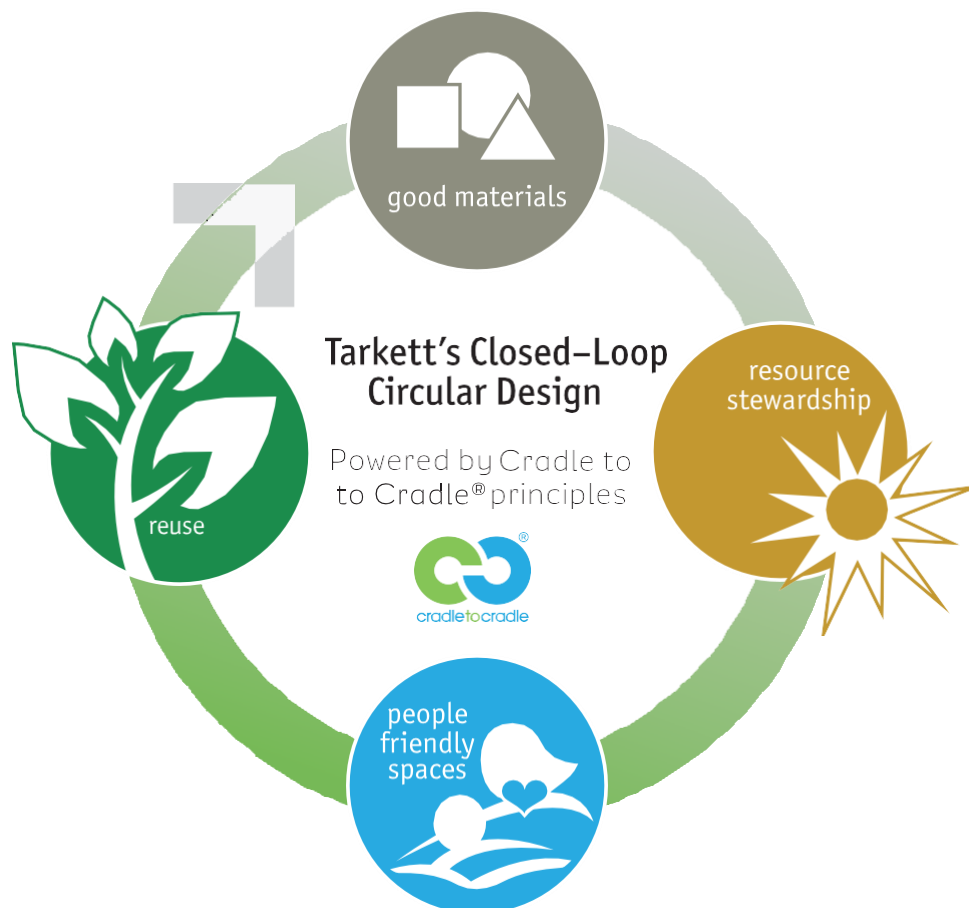
21020 649 Light Green



21020 010 Medium Green

Make your balanced choice

Tarkett's approach to sustainability is all about giving our customers simple and clear information so they can make the right choice of flooring, balancing their project and budget requirements beside the need for sustainable solutions



ECLIPSE PREMIUM SPIRIT COLLECTION



Available in Rolls Price Level



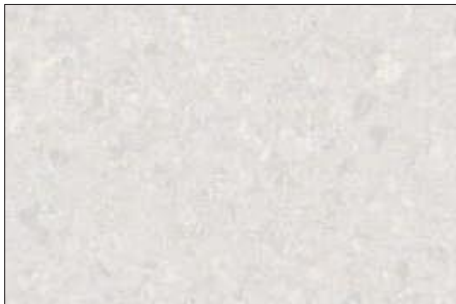
 21020 964 Medium Pure Grey



 21020 965 Medium Dark Pure Grey



 21020 972 Light Beige



 21020 963 Light Pure Grey



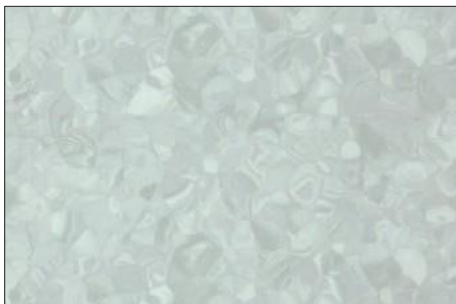
 21020 979 Medium Blue



 21020 976 Medium Green



 21020 980 Dark Blue



 21020 736 Light Grey Green



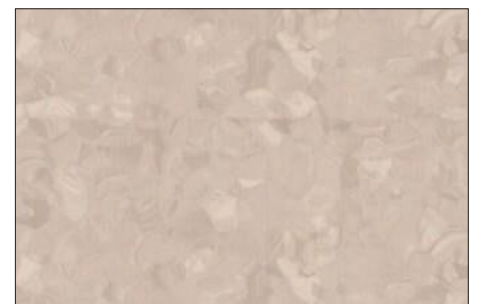
 21020 732 Yellow



 21020 994 Medium Yellow Beige



 21020 728 Brown

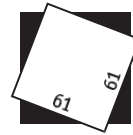


 21020 973 Medium Warm Beige

PRIMO SD



Static dissipative



Available in Rolls & Tiles

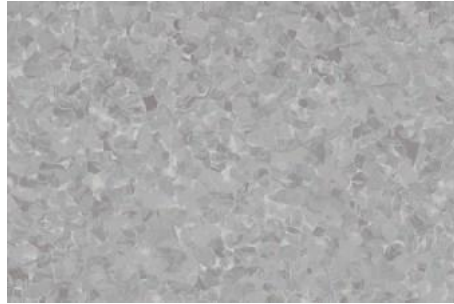


Price Level



21012 561
21016 561

Medium Pure Grey



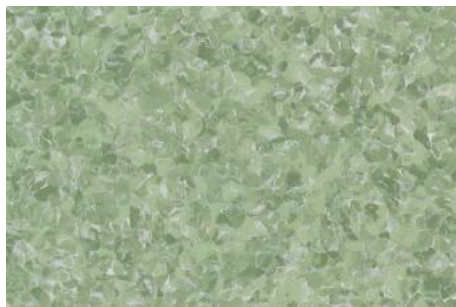
21012 562
21016 562

Medium Dark Pure Grey



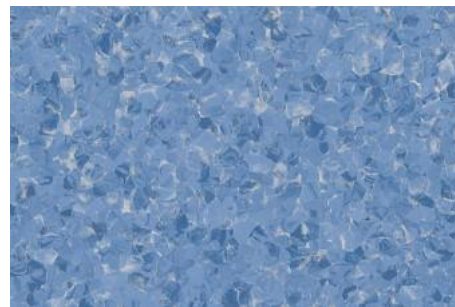
21012 565
21016 565

Medium Warm Beige



21012 567
21016 567

Medium Green



21012 569
21016 569

Medium Blue

PRIMO SAFE.T



R10, Slip Resistant



Available in Rolls



Price Level



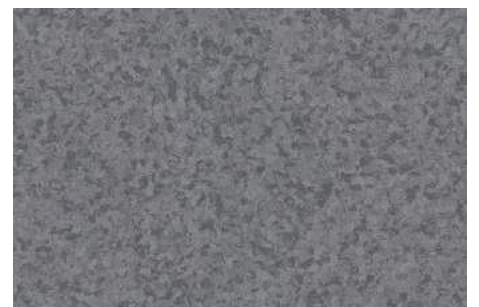
21013 790

Light Pure Grey



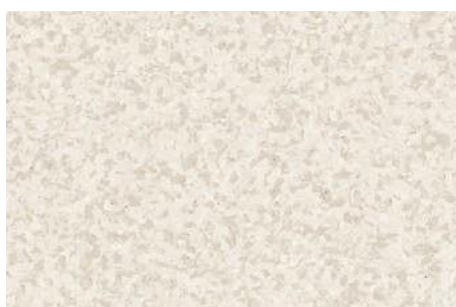
21013 794

Medium Cool Grey



21013 795

Dark Cool Grey



21013 799

Light Beige



21013 806

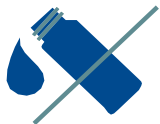
Medium Blue



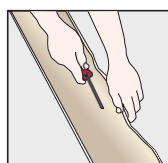
*“Enhanced
life-cycle cost for
building owners”*

Low Cost & Simplified Maintenance

Premium benefits from a special PUR reinforcement* that seals and hardens the surface to make it more resistant to dirt and daily wear and tear, as well as simplifying cleaning and maintenance.



**No additional surface
treatment needed**



Flexible flooring solutions
for **perfect coving** results
and improved maintenance

* Except Primo SD



Significantly reduces use of
water, energy and chemical
detergents for a **better
environmental footprint
and excellent life-cycle cost**



Specially designed for **heavy
traffic zones** where hygiene
and resistance are critical
such as schools, hospitals and
public buildings

PREMIUM COLLECTION

Specification

The Premium Collection are homogeneous, high-quality vinyl floorings for most types of premises such as schools, healthcare facilities and other types of public buildings. Its Unique colour, design and function coordination system allows endless combination possibilities. Beneficiary easy and low cost maintenance enhance the life cycle cost. The Premium Collection are produced with phthalate-free technology and improved indoor air quality.

| | STANDARDS | Eclipse Premium | Primo Premium | Primo Safe.T | Primo SD |
|---|--------------------|--|--|--|---|
| CERTIFICATION & CLASSIFICATION | | | | | |
| Type of Floorcovering | ISO 10584 - EN 649 | Homogeneous vinyl flooring | Homogeneous vinyl flooring | - | Static dissipative pressed homogeneous vinyl flooring |
| | EN 13843 | - | - | Slip resistant homogeneous vinyl flooring | - |
| Binder Content | ISO 10581 | Type I | Type I | - | Type I |
| CE Certification | EN 14041 | Yes | Yes | Yes | Yes |
| Classification | ISO 10874 - EN 685 | Commercial : 34 | Commercial : 34 | Commercial : 34 | Commercial : 34 |
| | | Industrial : 43 | Industrial : 43 | Industrial : 43 | Industrial : 43 |
| ISO Certification | | Ronneby ISO 9001/Ronneby ISO 14001 | Ronneby ISO 9001/Ronneby ISO 14001 | Ronneby ISO 9001/Ronneby ISO 14001 | Ronneby ISO 9001/Ronneby ISO 14001 |
| TECHNICAL CHARACTERISTICS | | | | | |
| Surface Treatment | | PUR reinforced | PUR reinforced | Safe.T Clean | PUR reinforced |
| Total Thickness | ISO 24346 - EN 428 | 2.0 mm | 2.0 mm | 2.0 mm | 2.0 mm |
| Total Weight | ISO 23997 - EN 430 | 3000 g/m ² | 3000 g/m ² | 3000 g/m ² | 3000 g/m ² |
| Form of Delivery | ISO 24341 - EN 426 | Approx. 23 r m x 200 cm | Approx. 23 r m x 200 cm | Approx. 23 r m x 200 cm | Approx. 23 r m x 200 cm |
| | Sheet (Rolls) | art. no. 21020 ___ (3 digit colour number) | art. no. 21010 ___ (3 digit colour number) | art. no. 21013 ___ (3 digit colour number) | art. no. 21012 ___ (3 digit colour number) |
| | ISO 24342 - EN 427 | | | | 61 x 61 cm - 16 tiles / box = 5.95 m ² |
| | Tiles (Box) | | | | art no. 21016 ___ (3 digit colour number) |
| TECHNICAL PERFORMANCE | | | | | |
| Dimensional Stability | ISO 23999 - EN 434 | ≤ 0.40 % for rolls | ≤ 0.40 % for rolls | ≤ 0.40 % for rolls | ≤ 0.40 % for rolls |
| | | - | - | - | ≤ 0.25 % for tiles |
| Reaction to Fire | EN 13501-1 | Class B _{fl} s1 | Class B _{fl} s1 | Class B _{fl} s1 | Class B _{fl} s1 |
| | EN ISO 9239-1 | ≥ 8 kW/m ² | ≥ 8 kW/m ² | ≥ 8 kW/m ² | ≥ 8 kW/m ² |
| | EN ISO 11925-2 | Pass | Pass | Pass | Pass |
| Abrasion Volume Loss | EN 660: Part 2 | Group P: ≤ 4.0 mm ³ | Group P: ≤ 4.0 mm ³ | Group P: ≤ 4.0 mm ³ | Group P: ≤ 4.0 mm ³ |
| Residual Indentation | ISO 24343-1-EN 433 | Required value: ≤ 0.10 mm | Required value: ≤ 0.10 mm | Required value: ≤ 0.10 mm | Required value: ≤ 0.10 mm |
| | | Average measured value: 0.03 mm | Average measured value: 0.03 mm | Average measured value: 0.03 mm | Average measured value: 0.03 mm |
| Castors Chair Test | ISO 4918 - EN 425 | Suitable | Suitable | Suitable | Suitable |
| Flexibility | ISO 24344 - EN 435 | Pass | Pass | Pass | Pass |
| Static Electrical Discharge | EN 1815 | < 2 kV | < 2 kV | < 2 kV | < 2 kV |
| Clean Room Test | ASTM F24 F51 | Class A | Class A | - | - |
| | ISO 14644-1 | - | ISO class 4 | - | - |
| Ease of Decontamination | ISO 8690 | Good | Good | - | Good |
| Electrical Insulation | VDE 0100, Part 600 | - | - | - | Ri ≥ 5 x 104 Ohms |
| Electrical Resistance | EN 1081 | - | - | - | R1 ≤ 108 Ohms |
| Total VOC Emissions | AgBB/DIBt | ≤ 10 µg/m ³ (after 28 days) | ≤ 10 µg/m ³ (after 28 days) | ≤ 10 µg/m ³ (after 28 days) | ≤ 10 µg/m ³ (after 28 days) |
| | Indoor air quality | Platinum | Platinum | Platinum | Platinum |
| Underfloor Heating | | Suitable - max. 27° C | Suitable - max. 27° C | Suitable - max. 27° C | Suitable - max. 27° C |
| Thermal Resistance | EN 12667/DIN 52612 | Approx. 0.01 m ² K/W | Approx. 0.01 m ² K/W | Approx. 0.01 m ² K/W | Approx. 0.01 m ² K/W |
| Light Fastness | EN ISO 105-B02 | ≥ level 6 | ≥ level 6 | ≥ level 6 | ≥ level 6 |
| Chemical Resistance | EN 423 | Good resistance | Good resistance | Good resistance | Good resistance |
| Bacteria Resistance | EN ISO 846: Part C | Does not favour growth | Does not favour growth | Does not favour growth | Does not favour growth |
| Slip Resistance | DIN 51130 | R9 | R9 | R10 | R9 |
| | EN 13893 | ≥ 0.3 | ≥ 0.3 | ≥ 0.3 | ≥ 0.3 |
| | BS 7976-2 | Low risk of slip | Low risk of slip | Low risk of slip | Low risk of slip |
| Bare Foot Test | DIN 51097 | - | - | Class B (≥ 18°) | - |
| Seam Strength | EN 684 | Average value: ≥ 240 N/50 mm | Average value: ≥ 240 N/50 mm | Average value: ≥ 240 N/50 mm | Average value: ≥ 240 N/50 mm |

The above information is subject to modification for the benefit of further improvement. The market's instructions regarding installation, cleaning and maintenance should be observed.

Our Sustainability tag explains the content of our products and how they contribute to our sustainability strategy and human well-being.

| | | | | | | | | | |
|--|--|--|--|--|--|--|--|--|--|
| | | | | | | | | | |
|--|--|--|--|--|--|--|--|--|--|



Phone: +971554722980
Web: info@fixitdesign.ae